

HMI-SoftPLC

Arm Cortex®-A8

10"

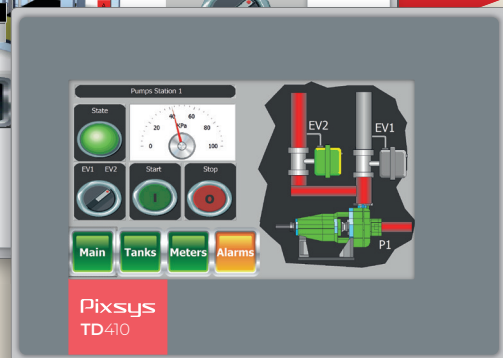


Pixsys
TD810

7"



Pixsys
TD710



Pixsys
TD410

4,3"

HMI PLC All-in-one

Programming tool standard IEC61131-3 - vectorial graphics

Optional analogue - digital I/O board plug-in

CPU 1GHz - Integrated graphics accelerator

Rugged aluminium case

Dual Ethernet Port - distinct networks

Pixsys Portal VPN - Remote Control and Assistance tool

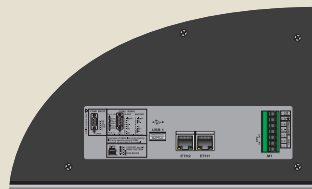
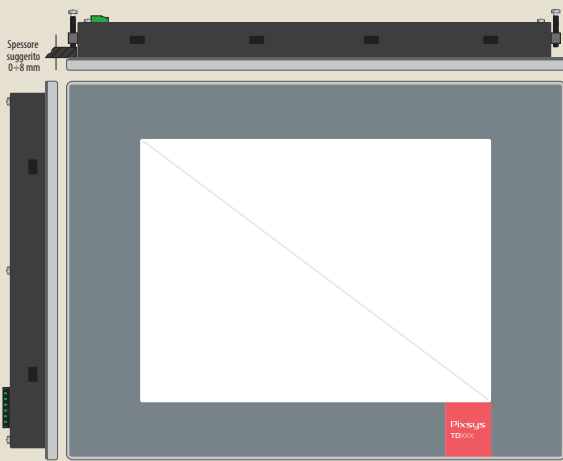


Pixsys Srl

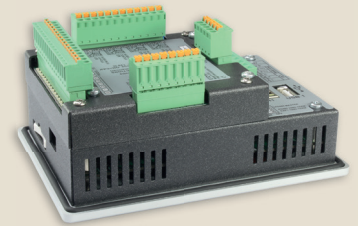
Via Po 16, I - 30030 Mellaredo di Pianiga VE
Ph. +39 041 519 0518 • Fax +39 041 519 0027

www.pixsys.net - sales@pixsys.net





TD410 (4,3")



Dimensions (mm)

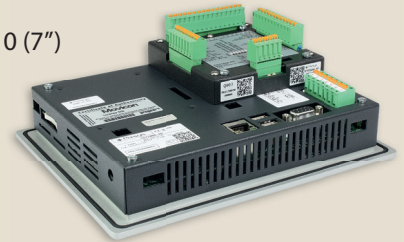
MODEL	L	H	W	L (CUT-OUT)	H (CUT-OUT)
TD410	140	100	29	132	90
TD710	204	160	35	181	144
TD810	274	216	35	259	202

TD710 (7")

ETD1644-AD

Optional I/O board plug-in

- 16 digital I/O
- 4 universal analogue input
- 4 analogue output mA / V



Main features



TD410



TD710



TD810

	TD410	TD710	TD810
DISPLAY	4.3" 16/9 TFT 480 x 272	7" 16/9 TFT 800 x 480	10" 4/3 TFT 800 X 600
TOUCH-SCREEN	Resistive	Resistive	Resistive
DIMENSIONS (MM)	140 x 100 x 29	204 x 160 x 35	274 x 216 x 35
PANEL CUT-OUT (MM)	132 x 90	181 x 144	259 x 202
POWER SUPPLY	12..24 V AC / DC - 5,5 W	24 V DC - 6,5 W	24 V DC - 7,5 W
SERIAL (PORTS)	RS485 - CAN	RS485 - CAN	RS485 - CAN
USB (PORTS)	● (1x)	● (2x)	● (2x)
ETHERNET	1x 10 / 100 Mbit/s	2x 10 / 100 Mbit/s	2x 10 / 100 Mbit/s
EXPANSION I/O SLOT 1	ETD1644	ETD1644	ETD1644
EXPANSION I/O SLOT 2	○	ETD1644	ETD1644
SOFT-PLC	●	●	●
PIXSYS PORTAL (VPN)	●	●	●

Hardware features

OPERATING SYSTEM	Windows® Embedded Compact 7 (WEC 7)
CPU	CORTEX-A8 @1.0GHz
RAM	512 MB DDR3
FLASH MEMORY / STORAGE	4GB

Programming tools

LOGICLAB (LOGICS)	●	●	●
MOVICON CE (I/O BITE)	● (512)	● (1024)	● (1024)
PROTOCOLS	Modbus RTU - Modbus TCP/IP - OPC-UA client - ADS Twin CAT - B+R System 2000 PVI - S7/TCP - FINS Serial - FINS Ethernet - NJ Ethernet/IP - MELSEC Serial - MELSEC Ethernet - DF1 Protocol - Ethernet/IP		

ORDERING CODES

TD410-AD	HMI+SOFTPLC 4.3" - WIN-CE 7 - MOVICON 11 - 1 RS485-1 RS232-1 CAN-1 ETHERNET-24VDC
TD710-A-2ETH	HMI+SOFTPLC 4.3" - WIN-CE 7 - MOVICON 11 - 1 RS485-1 RS232-1 CAN-2 ETHERNET-24VDC
TD810-A-2ETH	HMI+SOFTPLC 4.3" - WIN-CE 7 - MOVICON 11 - 1 RS485-1 RS232-1 CAN-2 ETHERNET-24VDC