

# HMI

## Arm Cortex®-A8



## HMI - Movicon 11 SCADA

Third-party PLC communication drivers integrated

CPU 1GHz - Integrated graphics accelerator

Rugged aluminium case

Dual Ethernet Port - distinct networks

Pixsys Portal VPN - Remote Control and Assistance tool



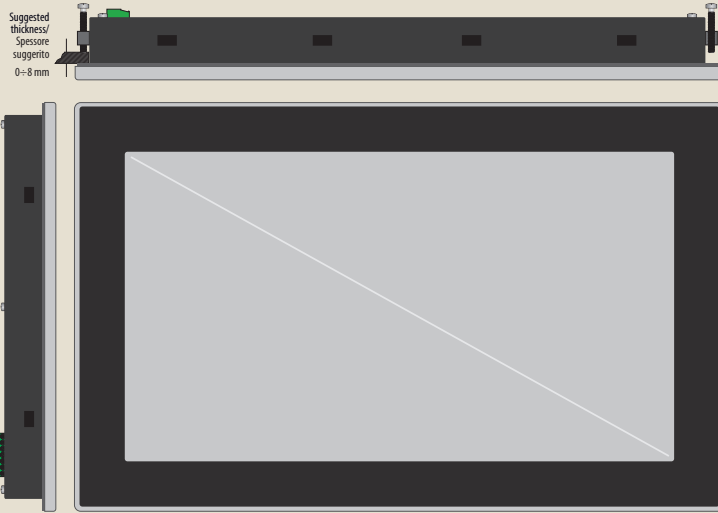
### Pixsys Srl

Via Po 16, I - 30030 Mellaredo di Pianiga VE  
Ph. +39 041 519 0518 • Fax +39 041 519 0027

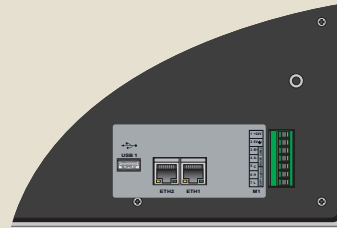
www.pixsys.net - sales@pixsys.net



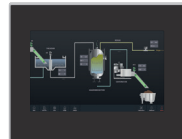
## Dimensions (mm)



MODEL	L	H	W	L (CUT-OUT)	H (CUT-OUT)
TD710	204	160	35	181	144
TD810	274	216	35	259	202
TD815	268	191	35	256	178
TD820	317	220	35	302	206
TD830	408	257	45	393	242



## Main features



TD710-HMI



TD810-HMI



TD815-HMI



TD820-HMI



TD830-HMI

	TD710-HMI	TD810-HMI	TD815-HMI	TD820-HMI	TD830-HMI
DISPLAY	7" TFT 800 x 480	10.4" TFT 800 x 600	10.1" TFT 1280 x 800	12.1" TFT 1280 x 800	15.6" TFT 1366 x 768
TOUCH-SCREEN	Resistive	Resistive	Resistive	Resistive	Resistive
DIMENSIONS (MM)	204 x 160 x 35	274 x 216 x 35	268 x 191 x 35	317 x 220 x 35	408 x 257 x 45
PANEL CUT-OUT (MM)	181 x 144	259 x 202	256 x 178	302 x 206	393 x 242
POWER SUPPLY	24 V DC - 6,5 W	24 V DC - 7,5 W	24 V DC - 7,5 W	24 V DC - 8,5 W	24 V DC - 15 W
SERIAL PORT (TERMINAL BLOCK)	RS485	RS485	RS485	RS485	RS485
USB (PORT)	● (1x)	● (1x)	● (1x)	● (1x)	● (1x)
ETHERNET	2x 10 / 100 Mbit/s	2x 10 / 100 Mbit/s	2x 10 / 100 Mbit/s	2x 10 / 100 Mbit/s	2x 10 / 100 Mbit/s
SOFT-PLC	○	○	○	○	○
PIXSYS PORTAL (VPN)	●	●	●	●	●

## Hardware features

OPERATING SYSTEM	Windows® Embedded Compact 7 (WEC 7)
CPU	CORTEX-A8 @1.0GHz
RAM	512 MB DDR3
FLASH MEMORY / STORAGE	8GB SLC FLASH INDUSTRIAL

## Programming tools

LOGICLAB (LOGICS)	○	○	○	○	○
MOVICON CE (I/O BITE)	● (512)	● (1024)	● (1024)	● (1024)	● (1024)
PROTOCOLS	Modbus RTU - Modbus TCP/IP - OPC-UA client - ADS Twin CAT - B+R System 2000 PVI - S7/TCP - FINS Serial - FINS Ethernet - NJ Ethernet/IP - MELSEC Serial - MELSEC Ethernet - DF1 Protocol - Ethernet/IP				

### TD710-A-2ETH-HMI

Product size \_\_\_\_\_ HMI version \_\_\_\_\_  
 24V DC Power supply \_\_\_\_\_ 2 distinct Ethernet ports \_\_\_\_\_

## ORDERING CODES

TD710-A-2ETH-HMI	HMI 7" - WIN-CE 7 - MOVICON 11 - 1 RS485-1 USB-2 ETHERNET-24VDC
TD810-A-2ETH-HMI	HMI 10.4" - WIN-CE 7 - MOVICON 11 - 1 RS485-1 USB-2 ETHERNET-24VDC
TD815-A-2ETH-HMI	HMI 10.1" - WIN-CE 7 - MOVICON 11 - 1 RS485-1 USB-2 ETHERNET-24VDC
TD820-A-2ETH-HMI	HMI 12.1" - WIN-CE 7 - MOVICON 11 - 1 RS485-1 USB-2 ETHERNET-24VDC
TD830-A-2ETH-HMI	HMI 15.6" - WIN-CE 7 - MOVICON 11 - 1 RS485-1 USB-2 ETHERNET-24VDC